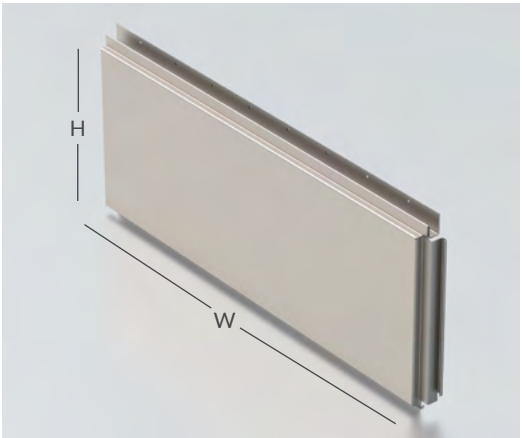
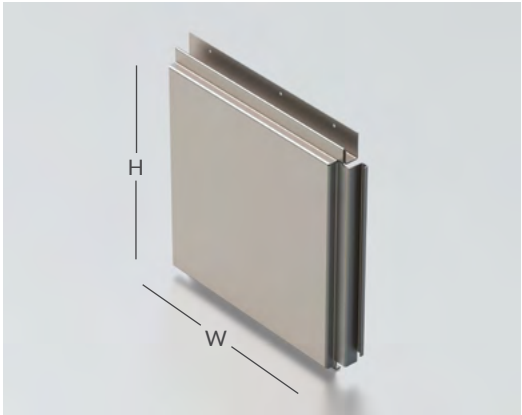


CLADLOK™ VS (Value Series) Order Form

DATE:

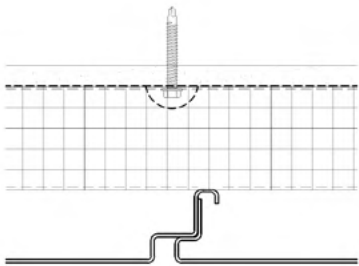
CLADLOK™ VS PANEL SIZE OPTIONS



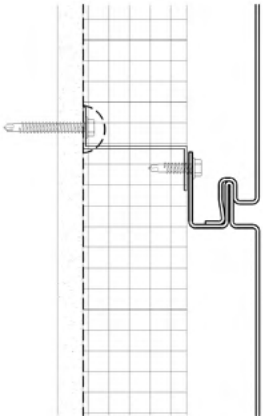
QTY	SIZES
	18in W x 30in H
	24in W x 24in H
	24in W x 30in H
	24in W x 48in H
	30in W x 30in H
	30in W x 60in H
	42in W x 30in H
	48in W x 24in H
	54in W x 30in H
	72in W x 24in H
	96in W x 24in H

CLADLOK™ VS is not available in Tapered or Dimensional. Dimensions are pulled from CL of joint to CL of joint. Typical CLADLOK™ joint is 1/2". If flat sheets are needed, please contact CEI Materials.

Vertical Joint Detail



Horizontal Joint Detail



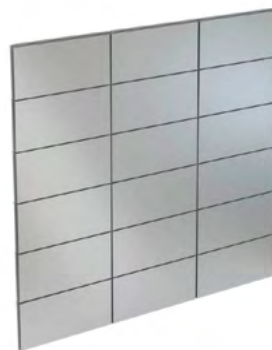
CLADLOK™ VS PANEL LAYOUT OPTIONS (Select One)



☐ 1/4 Horizontal Joint Stagger



☐ 1/2 Horizontal Joint Stagger



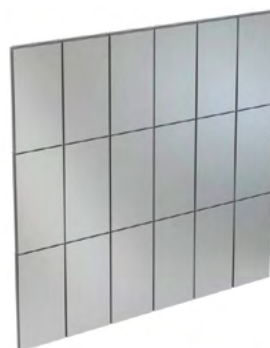
☐ Horizontal Panel Stacked



☐ 1/4 Vertical Joint Stagger



☐ 1/2 Vertical Joint Stagger



☐ Vertical Panel Stacked



CLADLOK™ VS EXTRUSIONS/TRIMS/ACCESSORIES

All CLADLOK™ extrusions are made of 6063 T-6 aluminum and can be painted to match. Two-piece extrusions are ideal on projects with tight time frames and offer installation flexibility. All extrusions work best with our Value Series system and come with gaskets to eliminate vibration and seal the panel. Contact CEI Materials for more information on CLADLOK™ extrusion details.



QTY:

2-Piece Outside Corner Extrusion

Part Name & Number:

Outside Corner Cap OC-2

Outside Corner Receiver OC-1

Size: 12' (144") Long



QTY:

2-Piece Inside Corner Extrusion

Part Name & Number:

Inside Corner Cap IC-2

Inside Corner Receiver IC-1

Size: 12' (144") Long



QTY:

2-Piece Termination Extrusion

Part Name & Number:

Termination Cap T-2

Termination Receiver T-1

Size: 12' (144") Long

QTY:

CLADLOK™ Starter

Part Name & Number:

STR-1

Size: 12' (144") Long



www.ceimaterials.com | info@ceimaterials.com

800 E. Duncan Street, Manchester Michigan 48158 | 734.212.3006

1220 North 2200 West, Suite 100 Salt Lake City, UT 84116 | 1-385-401-1022


© 2025 CEI Materials Inc. All Rights Reserved.

CLADLOK™ VS COLOR OPTIONS

STANDARD COLORS

		Bone White			Colonial Red
		Pure White			Patina Green
		Cadet Gray			Dark Ivy
		Castle Gray			Hartford Green
		Basalt Gray			Interstate Blue
		Greyhound			Military Blue
		Dusty Charcoal II			Ultramarine Blue
		Beige			Focus Black II
		Oyster			Statuary Bronze
		Magnolia			

PREMIUM COLORS

		Anodic Clear Mica			Weathered Zinc
		Steel City Silver Mica			Copper Penny
		Graphite Mica			

CUSTOM COLOR

Color Code		Color Name	
------------	--	------------	--

A signed photocopy with color name and code is required by CEI Materials before an order can be entered.



CUSTOMER INFORMATION

Company:	
Street Address:	
City:	
Contact:	
State:	
Zip Code:	
Contact:	
Email address:	
Phone #:	

SHIPPING INFORMATION - If ship to address is the same as customer contact, please leave blank

Company:	
Street Address:	
City:	
Contact:	
State:	
Zip Code:	
Contact:	
Email address:	
Phone #:	

SPECIAL SHIPPING INSTRUCTIONS - CLADLOK™ VS will ship either by LTL freight or dedicated box truck. After-hour deliveries, weekends, holidays, lift gates, or any special deliveries will be charged extra.

AUTHORIZATION - Before an order can be placed into production, CEI Materials requires that the CLADLOK™ VS order form be filled out in its entirety. A signed proposal and terms of sale confirms that the corresponding quantities and sizes listed on the CLADLOK VS order form and purchase order matches the correct dollar amount.

P.O.	
Job Name:	
Name (Authorized Representation)	
Date:	
Title:	



www.ceimaterials.com | info@ceimaterials.com

800 E. Duncan Street, Manchester Michigan 48158 | 734.212.3006
1220 North 2200 West, Suite 100 Salt Lake City, UT 84116 | 1-385-401-1022

© 2025 CEI Materials Inc. All Rights Reserved.