

RETAIL

STANDARD FINISHES



Finishes That Deliver Maximum Impact

Maximum brand impact comes from creating a long-lasting customer impression. Around the world, companies rely on Reynobond® and Reynolux® panels to amplify the visual impact of their brands. Offering long-term, cost-effective, consistent solutions for retail chains and their designers, these panels are durable, weather resistant, lightweight, flexible, and easy to fabricate and maintain. They're available in a nearly limitless array of stock and custom finish options. And of crucial importance to any brand, Reynobond and Reynolux panels showcase consistent program colors from one location to the next.

Use this color chart for a closer look at our standard color offerings (stocked as Reynobond panel inventory, pre-finished coil* and 0.40" Reynolux flat sheet), and envision a world of possibilities for your retail project. Plus, if you don't immediately see the color you need, our custom color matching will get you exactly where you need to be.

Duragloss® 3000 Finishes

Our Duragloss paint system delivers flexibility that enables architects and designers to explore the most imaginative and eye-catching solutions to enhance the brand of retail image programs. These paint finishes are formulated for high UV resistance with the capability of bright vibrant colors, with high- or low-gloss levels. These features help reduce maintenance costs over the life of a brand image, making this an ideal paint finish for all retail applications. Custom colors can be mixed to ensure a precise color match for any retail program.

Colorweld® 300 Finishes

Leveraging a unique proprietary resin system that incorporates 70% polyvinylidene fluoride (PVDF), Colorweld 300 paint finishes offer high-gloss ranges between 30% and 70% opacity, using pure, non-reactive thermoplastic and fluoropolymer technology. Available in a variety of colors, including metallic and exotic, Colorweld 300 finishes incorporate high-quality exterior-grade, durable, colorfast ceramic pigments. Our special base resin provides a durable finish that protects from weathering, abrasion and fading.

Natural Metal Offerings

Our natural metal composite panels give you all the functional benefits of Reynobond panels along with the aesthetic impact that can come only from nature's finest elements. Our brushed aluminum, zinc, stainless and copper give you bold options for interior and exterior walls and accents, while allowing you to incorporate curves, angles and other design elements not possible with heavy plate and sheet.

Colorweld® 500/500XL Finishes

High-performing, coil-coated Colorweld 500 and Colorweld 500XL finishes allow color matching at the highest uniformity and quality. They feature 70% Kynar 500®/Hylar 5000® polyvinylidene fluoride (PVDF) resins with fluoropolymer technology, providing excellent flexibility and film adhesion for forming, with superior resistance to humidity, impact, salt spray, pollution and abrasion. With a 30-year finish warranty, they're considered the premier architectural coatings for metal. And, because Colorweld 500XL finishes are compatible with PPG's DURAPREP® Prep™ 400 graffiti remover system, your designs can be protected from graffiti and vandalism in any environment.

PrismFX™ Color-Shifting Finishes

PrismFX finishes can give your building a look as dynamic as your design. This 3-coat innovative coating creates subtle color shifts in different lighting conditions when viewed from different angles, so a building that appears green, blue or silver in the morning can shift to copper, violet or gold in the afternoon. Excellent flexibility and film adhesion for forming are delivered by this high-performance paint system, while also being resistant to humidity, impact, salt spray, pollution and abrasion, making it suitable for all outdoor architectural applications and a wide range of other specialty uses.

Design Line™ Nature-Inspired Finishes

Inspired by Mother Nature, our Design Line finish system offers a variety of striking, natural-material-based design choices that feature all the benefits of Reynobond aluminum composite material. These 3-coat advanced polymer coatings resist sun, extreme temperatures and even saltwater, making them ideal for outdoor applications.

Finish Performance Properties

Property	Test Method	Duragloss® 1000	Duragloss® 3000	Colorweld® 300	Colorweld® LF	Colorweld® 500 Opaque/Mica	Colorweld® 500XL Metallic	PrismFX™ (Duragloss® PFX)	Design Line™ (Duragloss® DL)
Specular Gloss (60)	ASTM D523	10–80	10–80	30–65	<10–80	15–55	25–35	20–60	20–60
Gloss Retention	ASTM D523	N/A	5 yrs FLA >50%	>50%	20 yrs FLA >80%	N/A	N/A	N/A	N/A
Pencil/Film Hardness	ASTM D3363	F-2H	F min	F–2H	F-2H	F-2H	F-2H	F min	F min
Coating Flexibility (T-bend)	ASTM D4145	1–T to 2–T; No pick off	1–T to 2–T; No pick off	1–T to 2–T; No pick off	1–T to 2–T; No pick off	1–T to 2–T; No pick off	1–T to 2–T; No pick off	1–T to 2–T; No pick off	1–T to 2–T; No pick off
Reverse Impact (1.5 thickness)	ASTM B2794		Passes	Passes	Passes	Passes	Passes	Passes	Passes
Salt Spray Resistance 5% Salt Fog @ 95° F	ASTM B117	Passes 1000 hrs	Passes 1000 hrs	Passes 4000 hrs	Passes 4000 hrs	Passes 4000 hrs	Passes 4000 hrs	Passes 3000 hrs	Passes 3000 hrs
Humidity Resistance 100% RH @ 100° F	ASTM D2247	Passes 1000 hrs	Passes 1000 hrs	Passes 1000 hrs	Passes 4000 hrs	Passes 4000 hrs	Passes 4000 hrs	Passes 1000 hrs	Passes 1000 hrs
Color Retention @ 45°, South Florida	ASTM D2244		5 years, Max 5 fade	10 years, Max 5 fade	10 years, Max 5 fade	10 years, Max 5 fade	10 years, Max 5 fade	5 years, Max 5 fade	5 years, Max 5 fade
Chalk Resistance @ 45°, South Florida	ASTM D4214		5 years, >8 chalk	10 years, >8 chalk	N/A	10 years, >8 chalk	10 years, >8 chalk	5 years, >8 chalk	5 years, >8 chalk
Film Thickness	ASTM D1400	0.2 mil primer 0.75 mil top coat	0.2 mil primer 0.8 mil top coat	0.2 mil primer 0.75 mil top coat	0.6–0.7 mil clear coat	0.2 mil primer 0.8 mil top coat	0.2 mil primer 0.8 mil color coat 0.5 mil clear coat	0.6 mil primer 0.8 mil base coat 0.7 mil top coat	0.6 mil primer 0.8 mil base coat 0.7 mil top coat

Stay Up to Date on Stock

Visit reynobond.com/stockinglist for our current listing of standard color offerings. Check back often as we adjust our finishes and sizes to meet your demands.

Custom Color Matching Services

Don't see the color you're looking for? We can help match any color you desire. Email your custom color match request to color.matching@alcoa.com and see the possibilities of high-performing color matches for Reynobond and Reynolux panels.

Request a Sample

To receive a sample of any of the finishes shown within this booklet, please call 800.841.7774 and ask for our Sample & Literature Department. If you prefer, you can email your request to samples.literature@alcoa.com.

Duragloss® 1000

5-year warranty



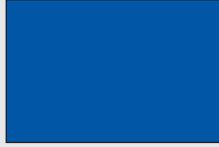
Eastman White
25*



Oyster
25*

Duragloss® 3000

10-year warranty
AAMA 2604



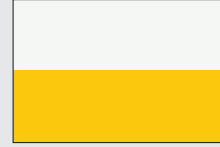
Brite Blue
75*



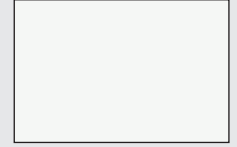
Brite Green
50*



Brite Yellow
55*



Brite White/Yellow Stripe
50*



Brite White
45*



Classic Red
80*



Classic White
35*



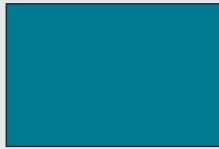
Program Blue
80*



Program White
75*



Program Red
80*



Program Teal
75*



Program Teal/Yellow Stripe
70*



Program Yellow
80*



Program Pearl
80*



Program Black
80*



Matte Blue
75*



Matte White
75*



Patriot Blue
75*



Patriot Blue/White Stripe
75*



Patriot Red/White Stripe
75*



Patriot Red
80*



Sapphire Blue
70*



Shamrock Green
60*



Scarlet Red
80*



Outrageous Green
45-55*



Eastman Red
40*

* Specular Gloss Reading

Colorweld® 300

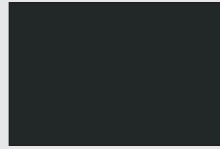
20-year warranty
AAMA 2605



Brilliant Red
55-65*



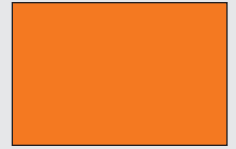
Cobble Brown
30-40*



Elegant Black
55-65*



Midnight Blue
25-35*



Orange Orange
40-50*



Portabella
30-40*



Winter White
45-55*

Natural Metals

Premium Metals

The appearance of our
Natural Metals may vary
with the lot of production.



Zinc



Stainless Steel



Copper

Anodized Premium Coating

The appearance of our
Anodized panels may vary
with the lot of production.



Clear Anodized

Colorweld® LF (Clear Coat)

20-year warranty

Compatible with PPG's
DURAPREP® Prep™ 400
graffiti-resistant coating.

The appearance of our
Colorweld LF finishes may
vary with lot of production.



Long Brushed
Aluminum
30*



Natural Brushed
Aluminum
30*



Natural Brushed
Aluminum Gray
30*

Colorweld® Brite (Clear Coat)

10-year reflection
warranty



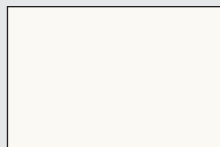
Brite Mirror
87% Reflectivity

Colorweld® 500

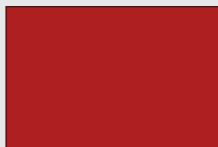
30-year warranty
AAMA 2605

SERIES ONE Standard Solid Finishes

All Colorweld 500 Series One finishes, with the exception of Eastman Blue, are stocked in 62" wide coil and are available in 0.040" x 48" Reynolux flat sheet.



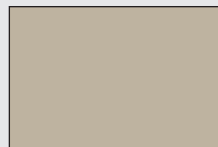
Bone White
25-35*
68.7¹, 82², 74³



Brite Red
25-35*
39.4¹, 42², 10³



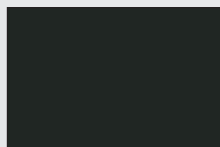
Cadet Gray
25-35*
35¹, 36², 34³



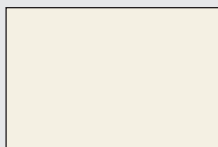
Castle Gray
25-35*
49.4¹, 56², 41³



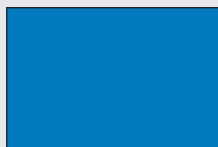
Pueblo Tan
25-35*
51.7¹, 60², 48³



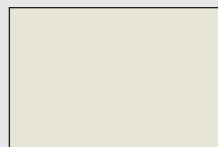
Deep Black
20-30*
4.5¹, 0², 5³



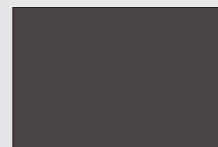
Frisco White
25-35*
69.1¹, 83², 75³



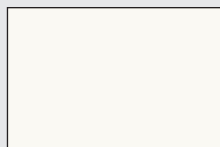
Eastman Blue
45-55*
37¹, 36.2², 17³



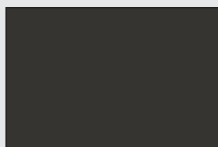
Oyster White
25-35*
67.4¹, 81², 67³



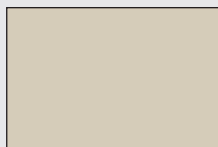
Classic Bronze
20-30*
9.8¹, 2², 7³



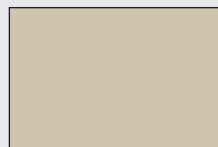
Pure White
25-35*
69.4¹, 83², 75³



Charcoal
25-35*
28.6¹, 28², 8³



Limestone
25-35*
66¹, 56.5², 73.99³



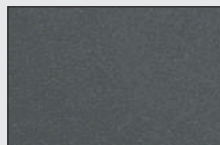
Sandstone
25-35*
82¹, 68.6², 73.7³

Colorweld® 500

30-year warranty
AAMA 2605

SERIES TWO Premium Mica Finishes

All Colorweld 500 Series Two finishes are stocked in 62" wide coil and are available in 0.040" x 48" Reynolux flat sheet.



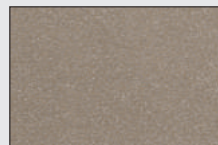
Pewter
15-25*
14.6¹, 10², 19³



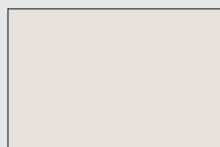
Platinum
20-30*
59.3¹, 70², 57³



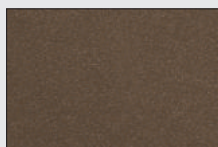
Silversmith
15-30*
58.1¹, 68², 52³



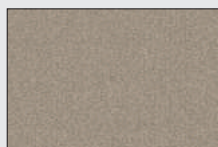
Vancouver Copper
15-25*
47.4¹, 53², 28³



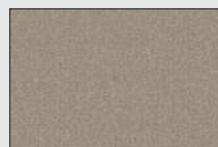
Daybreak Mica
15-25*
35.9¹, 38², 38³



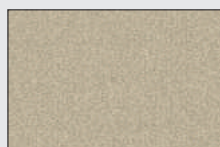
Medium Bronze
15-25*
63¹, 75², 57³



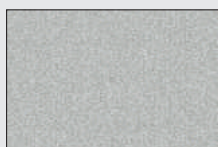
Champagne Mica
15-25*
29.5¹, 30², 21³



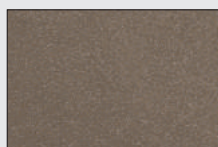
Driftwood Mica
15-25*
9.2¹, 3², 7³



Anodic Satin
20-30*
53.6¹, 61², 39³



Anodic Clear
20-30*
56.2¹, 65², 54³



Anodic Bronze
15-25*
42.9¹, 47², 23³

Anodic finishes are formulated to closely resemble popular anodized colors used on curtain wall profiles.

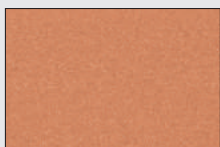
Colorweld® 500XL

30-year warranty
AAMA 2605

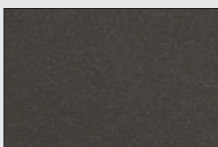
SERIES THREE Premium 3-coat Metallic Finishes

Compatible with PPG's
DURAPREP® Prep™ 400
graffiti-resistant coating.

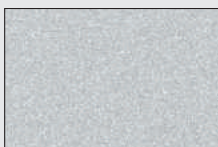
All Colorweld 500XL Series Three finishes are stocked in 62"-wide coil and are available in 0.040" x 48" Reynolux flat sheet.



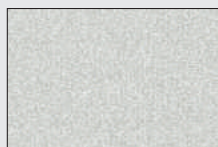
Copper Penny
25-35*
44.4¹, 48², 24³



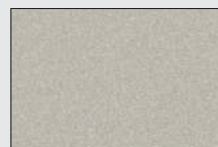
Nightfall Metallic
20-30*
11.1¹, 2², 8³



Bright Silver Metallic
15-30*
61¹, 70², 61³



Champagne Metallic
25-35*
54.3¹, 61², 52³



Titanium
25-35*
44.2¹, 47², 44³

Available with the EcoClean™ self-cleaning coating.
 Environment-friendly cool-pigment finish.

¹ Solar Reflectivity Value (SRV); ASTM C1549

² Solar Reflective Index (SRI); ASTM E1980

³ Light Reflectance Value (LRV); ASTM E1477

reynobond.com
reynobond.com/stockinglist

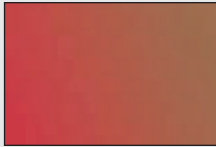
PrismFX™

(Duragloss® PFX)

Premium Finishes

20-year warranty

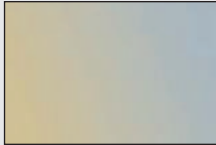
AAMA 2604



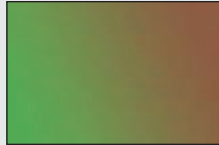
Autumn Wind



Indian Summer



Silver Gold



Spring Lake

Design Line™

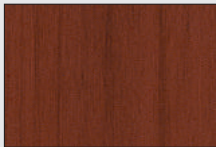
(Duragloss® DL)


20-year warranty

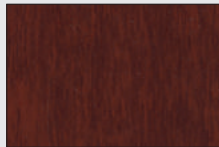
AAMA 2604


WOOD

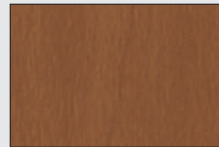
Premium Finishes




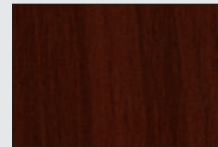
Colonial Red 




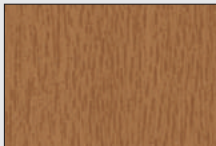
Embala Brown 




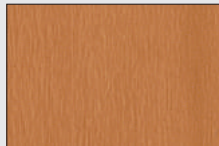
Italian Walnut 




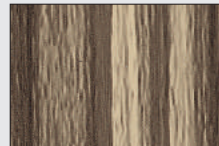
Mahogany Brown 



Scottish Oak 



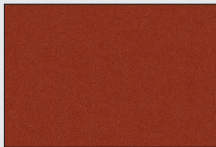
Sunny Pear 



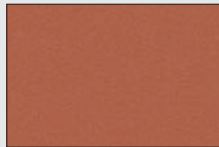
Zebra 

MINERAL

Premium Finishes



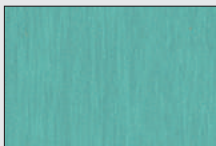
Terra di Siena



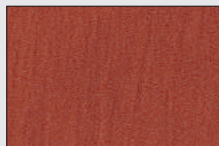
Terra Cotta Mineral

PATINA

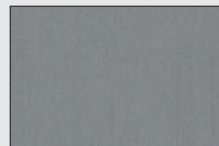
Premium Finishes



Copper Patina



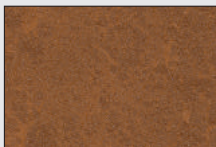
Rust Patina




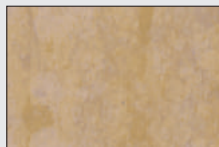
Zinc Patina 


STONE

Premium Finishes



Aciero Corten 



Apollo Stone 



Alcoa Architectural Products

50 Industrial Boulevard
Eastman, GA 31023-4129
Tel. 800 841 7774

reynobond.com or reynolux.com

©2016 Alcoa Architectural Products. Reynobond®, Reynolux®, Colorweld® and Duragloss® are registered trademarks and Design Line™, PrismFX™ and EcoClean™ are trademarks of Alcoa Inc. Kynar 500® is a registered trademark of Arkema Group. Hylar 5000® is a registered trademark of Solvay Solexis. DuraPrep® is a registered trademark and Prep™ is a trademark of PPG Architectural Finishes, Inc.

16AAP1714-R Apr 2016 ver. 1 15000