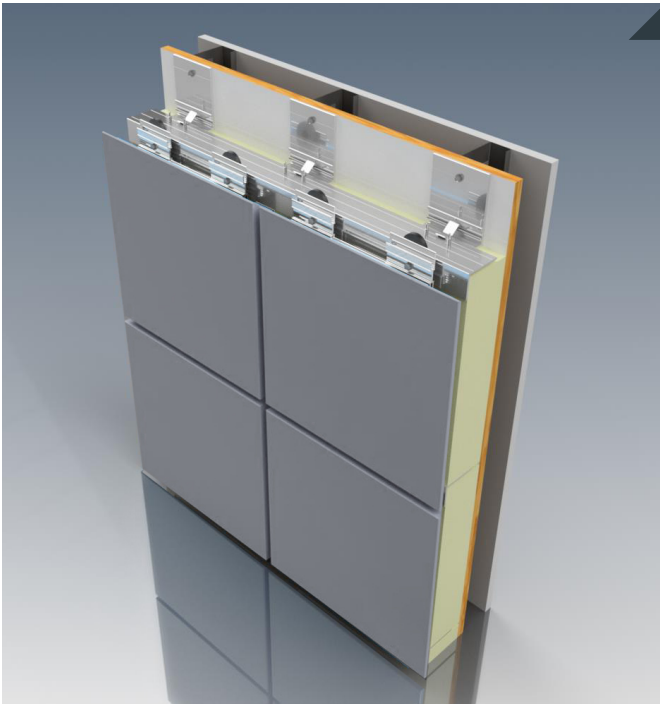


Aluminum Plate Panels

R3000, R4000, W5000, E1000, CL100, CL200, CL300



System Characteristics:

- 100% Recyclable
- Non Combustible
- Impact Resistant
- Durability: Rigidity of a Solid Panel
- Design Flexibility: Easy to Form/Perforate
- Can be Pre- or Post-Painted
- Cost Effective in Small Quantities
- Variety of Attachment Systems

Aluminum Plate Panels

CEI Materials' Aluminum Plate panels are made from solid 1/8" aluminum and offers the flatness and stiffness of MCM panels but with the dent resistance and recyclability of sheet metal. Available in numerous colors and finishes, aluminum plate has numerous fabrication and design options for both small and large projects.



TECHNICAL DETAILS

	ALUMINUM	STAINLESS STEEL
PANEL SIZE	W 8" - 51" L 12" - 98"	W 8" - 48" L 12" - 96"
FINISHES	<ul style="list-style-type: none"> • Anodized • Painted • Specialty 	<ul style="list-style-type: none"> • 2D - Cold-Rolled Dull • 4 - General Purpose • Polished • 6 - Dull, Satin • 8 - Mirror Finish
MATERIAL THICKNESS	.050in - .080in	16ga & 18ga
SYSTEM DEPTH	1-3/4 - 4" Nominal	1-3/4 - 4" Nominal
REVEAL WIDTH	1/2" Nominal	1/2" Nominal
WEIGHT/PSF	.8 - 1.2lbs/psf	2 - 2.5lbs/psf
ALL CEI MATERIALS SYSTEMS ARE FULLY TESTED	• AAMA 508-7: Pressure Equalized Rainscreen Test	
	• ASTM E330-02: Structural Design Loads (40psf)	
	• AAMA 501.1-05: Dynamic Water Infiltration Test	
	• ASTM E331-02: Static Water Infiltration	
	• ASTM E283-04: Static Air Infiltration	
	• ASTM E1233-06: Standard Test Method for Structural Performance	

*Kynar 500

		PANEL LENGTH (INCHES)							
SIZE CHART ALUMINUM .080"		12"	24"	36"	48"	60"	72"	84"	96"
PANEL WIDTH	48"	●	●	●	●	●	●	●	●
	42"	●	●	●	●	●	●	●	●
	36"	●	●	●	●	●	●	●	●
	30"	●	●	●	●	●	●	●	●
	24"	●	●	●	●	●	●	●	●
	18"	●	●	●	●	●	●	●	●
	8"	●	●	●	●	●	●	●	●
		1'-0"	2'-0"	3'-0"	4'-0"	5'-0"	6'-0"	7'-0"	8'-0"
		PANEL LENGTH (FEET)							

- Recommended Maximum Panel Dimensions
● Contact CEI Materials For More Information

Contact CEI Materials for larger panel sizes. (Maximum panel width and length cannot be combined on the same panel.) Contact CEI Materials for custom color matching.