

# CLADLOK™

MODULAR PANEL SYSTEMS

DESIGN GUIDE





**Contents**

Features & Benefits	3	Tapered Panel	6	Color Offering	10
Flat Panel	4	Custom Panel	7	Panel Layout Options	12
Dimensional Panel	5	Technical Details & Testing	8	Extrusions	13

CEI Materials' modular **CLADLOK™** Panel System is a pressure equalized rainscreen system that is easily installed to a wide variety of substrates and subgirt systems. This cassette style plate panel system has all interlocking edges formed from 1 piece of metal and does not require any additional components other than the fasteners that attach it to the wall or subgirt. This significantly reduces installation durations compared to other cladding systems on the market and offers a variety of architecturally appealing façade options without limitations.

## CLADLOK™ Features & Benefits

- Non-Combustible
- 100% Recyclable
- Pressure Equalized Rainscreen
- 20 Year Finish Warranty on Painted Options\*
- Works Well with Continuous Insulation
- Economical
- No Sealants
- Quick Installation
- Easily Field Cut
- Little to No Maintenance
- Short Lead Times
- Available in Embossed or Perforated
- Made in the USA

\*Unlimited finish options with painted anodized and natural metals



Haslett High School, Michigan





## PROFILE: Flat Panel

### CLADLOK™ Flat Panel System

Flat panels can be installed vertically, horizontally, or diagonally in a range of finishes offering you a variety of design options. Our flat panels provide a smooth, level surface with clean lines.

- Single-Depth Walls
- Standard Flat Surface
- Customizable
- Economical
- No Clips or Extrusions = Quick & Easy Installation



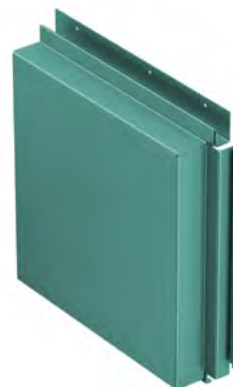


## PROFILE: Dimensional Panel

### CLADLOK™ Dimensional Panel System

Dimensional panels offer an inventive variation on the traditional flat substrate without disrupting the weather barrier. Panels can be installed at differing depths on the same plane to form a new level of intrigue.

- Multiple-Depth Walls
- Single-Depth Per Panel
- Customizable
- Limitless Design Options
- No Clips or Extrusions = Quick & Easy Installation





## PROFILE: Tapered Panel

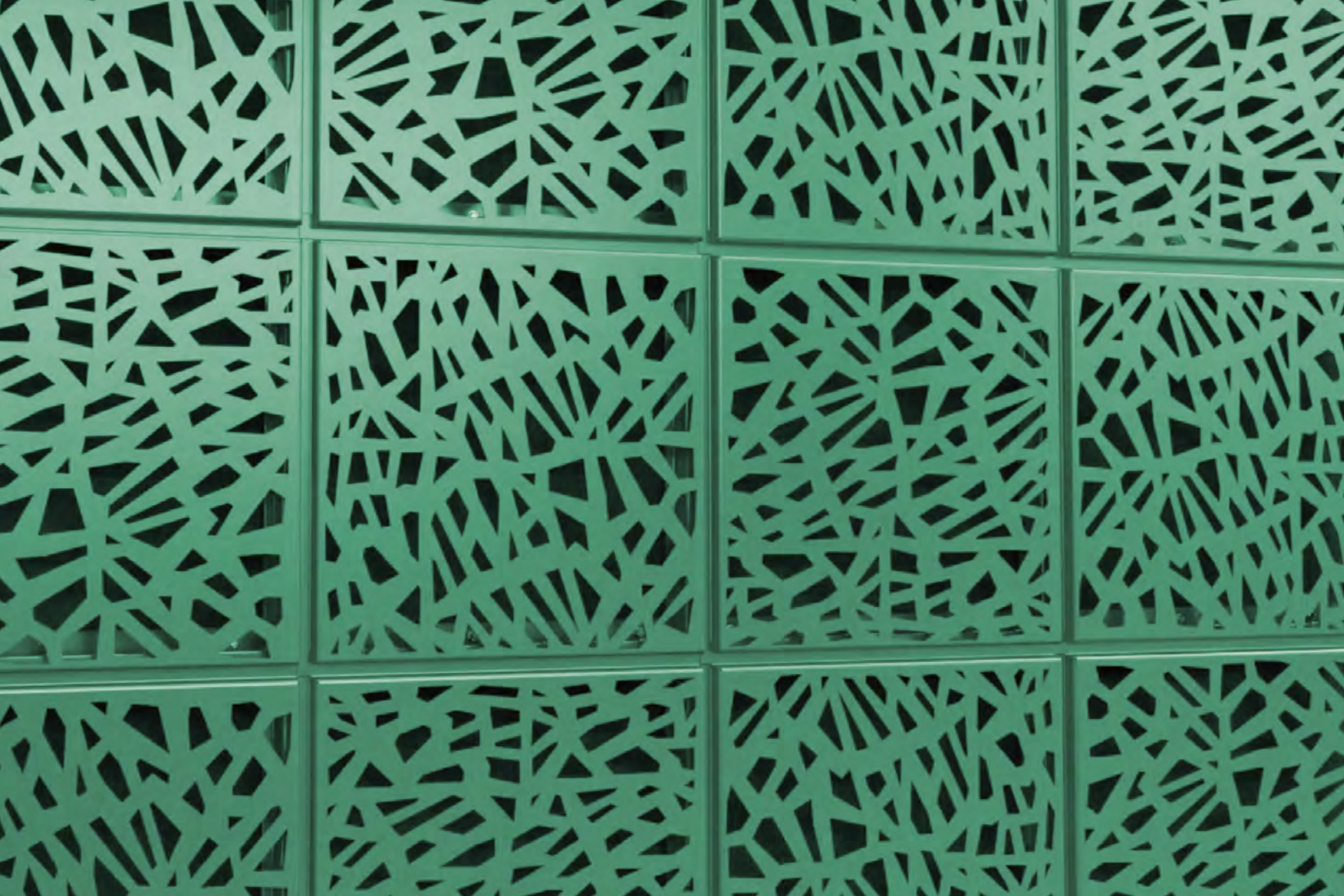
### CLADLOK™ Tapered Panel System

Tapered panels can be used to create inventive patterns. With variations in depth and angle, the panel can taper in almost any direction without altering the substrate or the weather barrier.

- Multiple-Depth Walls
- Multiple-Depth Per Panel
- Customizable
- Limitless Design Options
- No Clips or Extrusions = Quick & Easy Installation







## PROFILE: Custom Panel

### CLADLOK™ Custom Panel System

All of our panel options can also be perforated or embossed. If you can conceive it, we can construct it. Our sales representatives will work with you to find the right fit for your building's exterior aesthetic.

- Single or Multiple-Depth Walls
- Single-Depth Per Panel
- Customizable
- Limitless Design Options
- No Clips or Extrusions = Quick & Easy Installation



## Technical Details

CEI Materials' CLADLOK™ modular panel systems offer a variety of architecturally appealing façade options not seen with your typical rainscreen systems.

	ALUMINUM	ZINC	COPPER	STAINLESS STEEL
PANEL SIZE	W 8" - 51" L 12" - 98"	W 8" - 32" L 12" - 98"	W 8" - 28" L 12" - 84"	W 8" - 48" L 12" - 96"
FINISHES	<ul style="list-style-type: none"> <li>• Anodized</li> <li>• Painted</li> <li>• Specialty</li> </ul>	<ul style="list-style-type: none"> <li>• Natural</li> <li>• Graphite</li> <li>• Slate</li> <li>• Patina</li> </ul>	<ul style="list-style-type: none"> <li>• Natural</li> <li>• Patina</li> </ul>	<ul style="list-style-type: none"> <li>• 2D - Cold-Rolled Dull</li> <li>• 4 - General Purpose</li> <li>• Polished</li> <li>• 6 - Dull, Satin</li> <li>• 8 - Mirror Finish</li> </ul>
MATERIAL THICKNESS	.050in - .080in	1mm & 1.5mm	24oz & 32oz	16ga & 18ga
SYSTEM DEPTH	1-3/4 - 4" Nominal	1-3/4 - 4" Nominal	1-3/4 - 4" Nominal	1-3/4 - 4" Nominal
REVEAL WIDTH	1/2" Nominal	1/2" Nominal	1/2" Nominal	1/2" Nominal
WEIGHT/PSF	.8 - 1.2lbs/psf	1.6 - 2.2lbs/psf	1.5 - 2lbs/psf	2 - 2.5lbs/psf
ALL CEI MATERIALS SYSTEMS ARE FULLY TESTED	• AAMA 508-7: Pressure Equalized Rainscreen Test		• ASTM E330-02: Structural Design Loads (40psf)	
	• AAMA 501.1-05: Dynamic Water Infiltration Test		• ASTM E331-02: Static Water Infiltration	
	• ASTM E283-04: Static Air Infiltration		• ASTM E1233-06: Standard Test Method for Structural Performance	

\*Kynar 500

		PANEL LENGTH (INCHES)							
SIZE CHART ALUMINUM .080"		12"	24"	36"	48"	60"	72"	84"	96"
PANEL WIDTH	48"	●	●	●	●	●	●	●	●
	42"	●	●	●	●	●	●	●	●
	36"	●	●	●	●	●	●	●	●
	30"	●	●	●	●	●	●	●	●
	24"	●	●	●	●	●	●	●	●
	18"	●	●	●	●	●	●	●	●
	8"	●	●	●	●	●	●	●	●
		1'-0"	2'-0"	3'-0"	4'-0"	5'-0"	6'-0"	7'-0"	8'-0"
● Recommended Maximum Panel Dimensions ● Contact CEI Materials For More Information									
		PANEL LENGTH (FEET)							

Contact CEI Materials for larger panel sizes. (Maximum panel width and length cannot be combined on the same panel.)





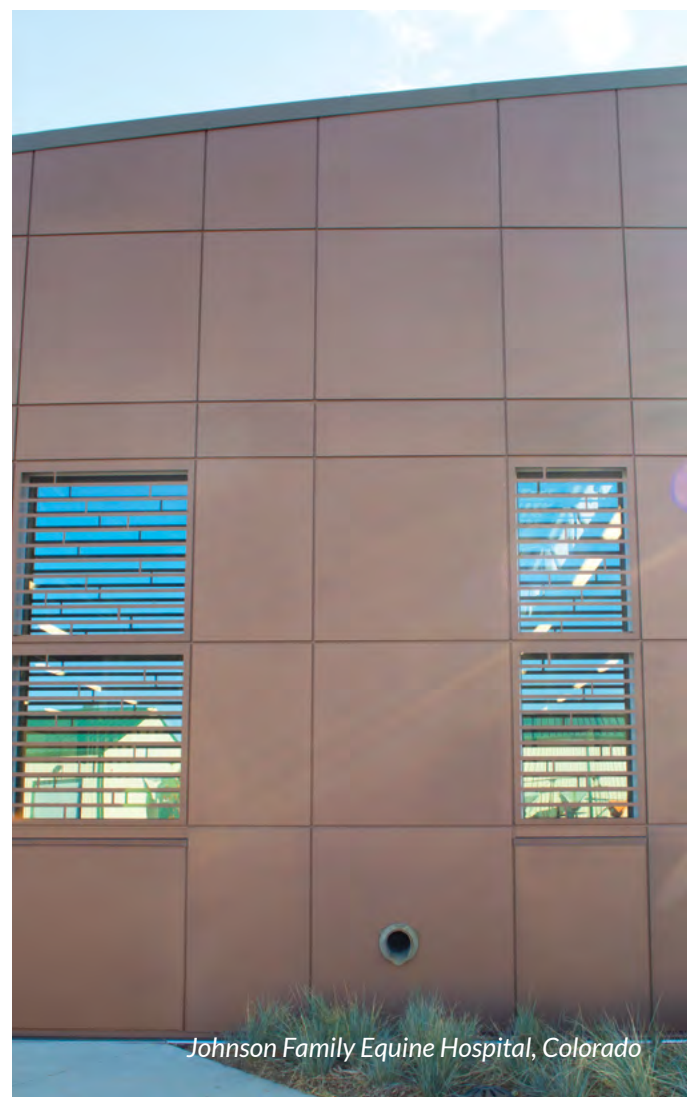
*Ann Arbor Shopping Center, Michigan*



*Tanglewood Assisted Living Facility, Texas*



*Mattawan Early Childhood Education Center, Michigan*

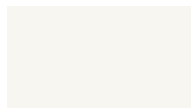


*Johnson Family Equine Hospital, Colorado*

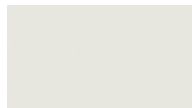
## Color Offering

With an unlimited number of color options, customizing your design is simple.  
Below is a sample of our most popular colors.

### Stock



Bone White



Stone White



City Scape



Slate Gray



Sandstone



Sierra Tan



Musket Gray



Colonial Red



Cardinal Red



Terra Cotta



Medium Bronze



Dark Bronze



Matte Black



Interstate Blue

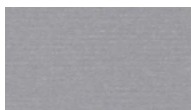


Charcoal



Hunter Green

### Premium



Anodic Clear



Silversmith



Silver



Champagne



Zinc



Weathered Zinc

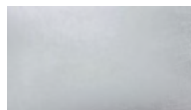
### Natural Metals



Natural Copper



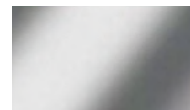
Patina Copper



Polished Stainless



Dull Stainless



Mirror Finish Stainless



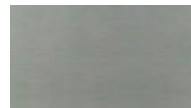
Natural Zinc



Patina Zinc



Graphite Zinc



Slate Zinc

Contact CEI Materials for custom color matching.





*Haslett High School, courtesy of Linetec*



*Amazon Distribution Warehouse Entrance, Alabama*



## Panel Layout Options

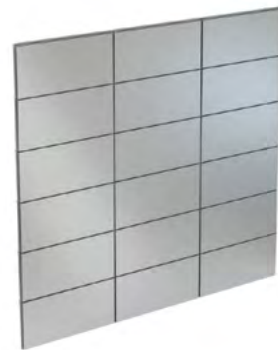
*Military Barracks, Texas*



**1/4 Horizontal Joint Stagger**



**1/2 Horizontal Joint Stagger**



**Horizontal Panel Stacked**



**1/4 Vertical Joint Stagger**



**1/2 Vertical Joint Stagger**



**Vertical Panel Stacked**

All CLADLOK™ extrusions are made of 6063 T-6 aluminum and can be painted to match. Two-piece extrusions are ideal on projects with tight time frames and offer installation flexibility. These extrusions work best with our flat panel system and come with gaskets to eliminate vibration and seal the panel.



### 2-Piece Outside Corner Extrusion

***Part Name & Number:***

**Outside Corner Cap OC-2**

**Outside Corner Receiver OC-1**

**CEI Materials offers two options:**

- Formed outside corners require a precise layout since they will wrap to the next elevation.
- The outside corner extrusion gives a clean look and more layout flexibility.



### 2-Piece Inside Corner Extrusion

***Part Name & Number:***

**Inside Corner Cap IC-2**

**Inside Corner Receiver IC-1**

- Inside corner extrusions are used where two walls meet or where a soffit meets a vertical wall.



### 2-Piece Termination Extrusion

**Part Name & Number:**

**Termination Cap T-2**

**Termination Receiver T-1**

- Termination extrusions are ideal at doors, windows, louvers, and dissimilar surfaces.



### CLADLOK™ Starter

**Part Name & Number:**

**STR-1**

- The Starter is used on the majority of CLADLOK™ projects and is used to start a panel run, typically at the base of a wall.
- The Starter requires field drilled weep holes.





### Formed Corners\*

- One dimension must not exceed a maximum dimension of 30".
- The minimum dimension is 3".
- The total unfolded panel length cannot exceed 98".



### Formed Column\*

- The return leg dimensions cannot exceed 80% of the column face (.8x") or a maximum of 30".
- The total unfolded panel length cannot exceed 98".

*\*If you have corner or column panels that fall outside of these parameters contact CEI Materials for additional options.*



800 E. Duncan Street, Manchester Michigan 48158 | 734.212.3006  
1220 North 2200 West, Suite 100 Salt Lake City, UT 84116 | 1-385-401-1022  
[sales@ceimaterials.com](mailto:sales@ceimaterials.com)

©2023 CEI Materials Inc. All Rights Reserved.