

A photograph of a modern high-rise building with a white and grey facade, featuring a grid of windows and green terraces. The building is set against a blue sky with some clouds. A yellow and grey graphic overlay is on the right side of the image.

## INVENTIVE FACADE SOLUTIONS

800 E. Duncan Street  
Manchester, Michigan 48158  
1.734.212.3006

1220 North 2200 West, Suite 100  
Salt Lake City, Utah 84116  
1.385.401.1022

[sales@ceimaterials.com](mailto:sales@ceimaterials.com)  
[www.ceimaterials.com](http://www.ceimaterials.com)



“

*Greatness can only be achieved  
with Commitment, Enthusiasm, &  
Integrity. We bring these qualities  
to each and every one of our  
projects”*

- JEFF HENRY, CEO





# Contents

- 06 **CEI Materials: The Company**
- 08 **The CEI Process**
- 11 **Sustainability**
- 12 **Our Products**
- 14 **Our Systems**
- 18 **Corporate Branding**

# Introduction

---

CEI Materials is a Nation-Wide, full service provider of Architectural Cladding Systems and Components. From concept to completion, new construction or retrofit, clients can rely on CEI to deliver the highest standards of quality. At CEI Materials we know what it takes to make your project a success. We will work with you every step of the way, providing innovative technology and excellent service throughout the entire process.



## CEI Materials: The Company

---

*CEI Materials was established in 2008 as a leader in the fabrication of Metal Composite Panel systems. Now with over 1000 projects installed and over 8,000,000 sqft of architectural panels fabricated to date, CEI Materials excels at assisting Architects and Construction Managers with design assistance and building envelope solutions from coast to coast.*

Over the last decade, we have been committed to becoming the foremost provider of architectural façades. CEI Materials now offers a total solution for your cladding requirements, including **Metal Composite Materials (MCM)**, **High Pressure Laminate (HPL)**, **CLADLOK Modular Panel Systems**, **Column Covers**, and **Aluminum Plate** panel systems. In addition, CEI Materials has the capabilities and expertise to provide custom fabricated Sunshades, Louvers, Screen Walls, and Pre-Engineered Modular Structures.







1000+

Projects Installed



90+

Employees



8,000,000+

Square Feet of Architectural  
Panels Fabricated to Date

*As a leader in the fabrication of composite materials, we are able to cut, route, and roll up to 25,000 sqft of MCM per week. We will meet or exceed your construction or performance requirements.*



Co-Founders, Jason Sherrill and Jeff Henry, took their experience as residential and commercial contractors and started CEI Materials as a small business in 2008. With sheer determination and vision they have grown CEI Materials into one of the premier fabricators of architectural façades.

Today CEI Materials occupies 2 state-of-the-art facilities: 68,000sf facility in Manchester, Michigan and another 22,500sf facility in Salt Lake City, Utah. Although CEI Materials has grown into a larger entity, keeping site of the importance of its people and values remains at its core.

# The CEI Process

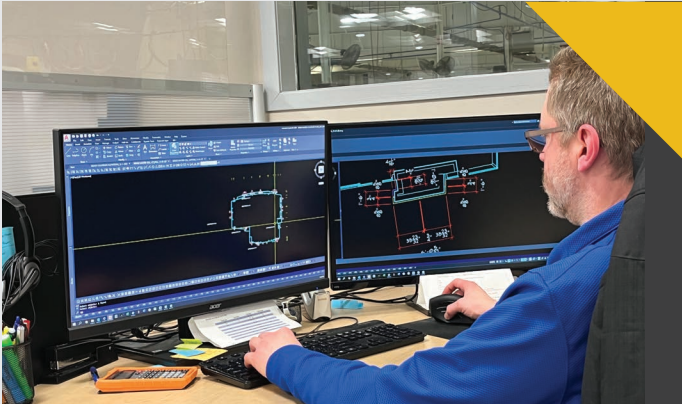
---

*At CEI Materials, we want to create open communication between the Architect, Building Owner, Contractor, Manufacturer, and the Fabricator. This is what sets us apart from other fabricators. CEI Materials works with everyone involved on all aspects of the project from the very beginning. This process, which includes Project Management, Design Assist, Fabrication and Installation, is much more efficient and greatly increases any project's success.*



We understand the importance of delivering projects on time, accurately and within budget. We take a professional approach to working with our clients to include frequent and open communication. In addition, CEI Materials' quality processes enable us to significantly reduce production lead times and project completion dates while delivering high value products. Qualified to handle the most complex construction challenges, our project team is well equipped and time tested, to help us to anticipate potential problems and provide solutions before fabrication begins.



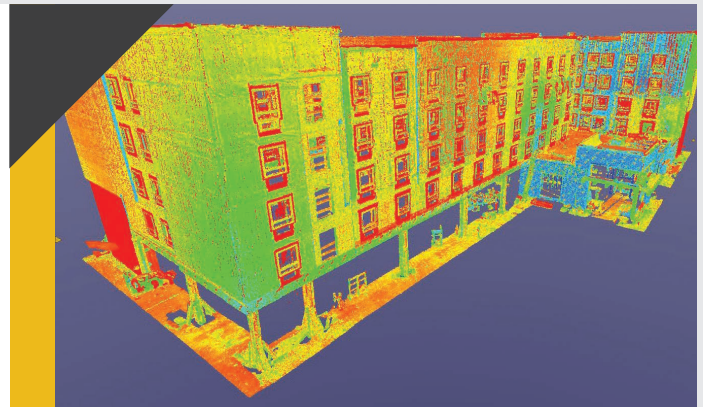


## Project Management

Our experienced Project Managers bridge the gap between CEI Materials (Design, Production and Installation) and the client to reduce risk (schedule, scope, budget and quality) and maximize benefit.

## Design Assist & Tech Support

CEI Materials' team of skilled Design Engineers are innovative and efficient. Our utilization of AutoDesk® Inventor® and Revit® software, allows us to seamlessly integrate architectural renderings for the prompt execution and submission of shop and production drawings.



## Fabrication Services

CEI Materials utilizes the latest CNC technology to provide the architectural designs and tolerances that our clients require. Our equipment, coupled with our experience, permits CEI Materials to deliver precision and speed to every step of fabrication, while specializing in architectural wall panel systems.

**In partnership with our sister company Supreme Material Solutions (SMS), we provide a single source turn-key solution.**

SMS employs experienced installation professionals capable of handling any cladding challenge. Our crews are well trained and operate at the highest level of quality and craftsmanship on every project.

**SUPREME**  
MATERIAL SOLUTIONS



## Fabrication Efficiencies

With fabrication capabilities at our facility in Manchester, Michigan we are capable of producing over a million square feet of architectural panel systems per year. CEI Materials utilizes the latest CNC technology to provide the architectural designs and tolerances that our clients require. Every CEI Materials product meets or exceeds construction and performance benchmarks so that any project will be of unquestionable quality.

## Installation Efficiencies

CEI Materials provides all required professional and technical expertise using our in-house resources, as well as skilled subcontractors that have completed all of CEI Materials' stringent training and background requirements. Each project is staffed by experts having developed the practical expertise to address and successfully complete your project. These career professionals possess the educational degrees and industry certifications that authenticate the capabilities of CEI Materials.

## Tested Systems & Code Compliance

All systems at CEI Materials are tested to ASTM and AAMA standards and are NFPA 285 compliant. It should be noted that NFPA 285 is a wall assembly test not a product test and that not all fabricators have invested in this test.



# Sustainability

*We design, fabricate and install materials made with recycled content to help you achieve your environmentally responsible objectives esthetically and within budget.*



## LEED® Green Building Rating

***The LEED® (Leadership in Energy and Environmental Design) Green Building Rating System™ is the nationally accepted benchmark for the design, construction, and operation of high performance green buildings.***

***The goal is to give “building owners and operators the tools they need to have an immediate and measurable impact on their buildings’ performance.” LEED identifies a building’s performance in the categories of Sustainability, Water Efficiency, Energy and Atmosphere, Materials and Resources, Indoor Environmental Quality and Innovation in Design. CEI can help in your effort to build it green!***



# Our Products

*At CEI Materials, we will meet or exceed your construction or performance requirements.*

## Metal Composite Materials (MCM)

The flexibility of our Metal Composite Materials allow CEI Materials to exceed the Architect's design intent and exterior cladding requirements while providing a high-quality, smooth, rigid and attractive finish.

By utilizing CEI Materials' Rainscreens and Route & Return Wet Joint Systems, clients are able to broaden architectural horizons through appearance, performance, fire resistance, sustainability and design flexibility.

## High Pressure Laminate (HPL)

High Pressure Laminate Panels are produced by saturating several layers of kraft paper with phenolic resin that are then compressed into a single sheet using high pressure and temperature.

HPL is a high-quality durable exterior wall cladding product designed to withstand the elements. This unique rainscreen façade features a double hardened acrylic polyurethane resin, which creates a powerful weather protective coating.







Project Name:  
**The Zen Apartment Complex**

Architect:  
Krieger Klatt Architects

Products Used:  
MCM Panels (R4000)

Location:  
Troy, Michigan

## CLADLOK®

CEI Materials' CLADLOK modular panel systems offer a variety of architecturally appealing façade options not seen with your typical rainscreen systems. CLADLOK provides a sustainable and economical solution to your project with fast installation times. From flat panel to tapered, perforated or embossed, the design options are limitless. CLADLOK is available for use with Aluminum, Zinc, Copper, & Stainless Steel.

## Aluminum Plate

Plate Panels are fabricated out of aluminum. CEI Materials offers a variety of solid aluminum plate and perforated panel systems. This material can be formed into limitless profile options and is available in numerous colors and finishes. Plate panels can be used in conjunction with any of CEI Materials' attachment systems.

## Column Covers

Our column covers can be formed to virtually any shape and are available in a number of different joint configurations and are available in either MCM or Aluminum Plate.

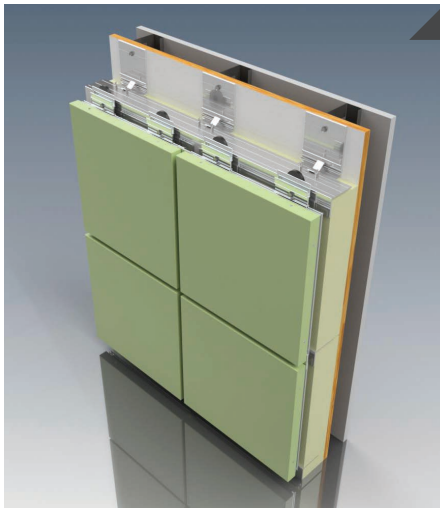
## Pre-Engineered Modular Structures

CEI Materials produces a variety of pre-engineered modular structures and possesses the capability to deliver on a large scale. With the use of prefabrication, preassembly and controlled fabrication techniques, CEI Materials is able to greatly improve efficiency and productivity.

The advantages of Modular Construction are reduced site pressure, quality control and stronger, more durable structures which can fulfill the requirements of every design.

# Our Systems

CEI Materials has three systems for the design and installation of MCM: R3000, R4000, and W5000 series. For HPL, CEI Materials offers the E1000 series and Concealed Joints, the C2000 series. For Column Covers, CEI Materials offers the CL100, CL200 and the CL300 series.



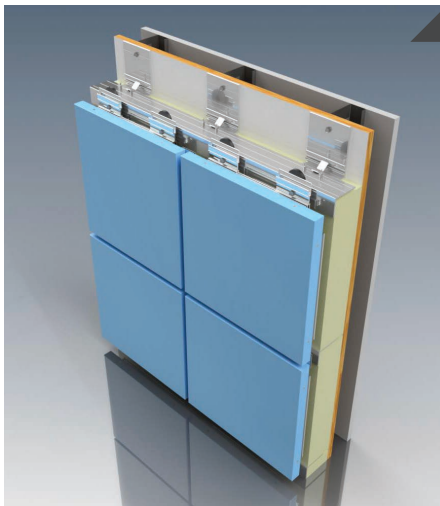
**R3000 Series**

## **Pressure Equalized Rainscreen System**

CEI Materials' R3000 Pressure Equalized Rainscreen System is tested to remove the driving forces of water penetration and equalizes the air-pressure on the external and internal sides of this compartmentalized Panel System.

### **System Characteristics:**

- Joint Width of 1/2 & 3/4"
- Independent 4mm MCM Spline Joint
- Tested to ASTM 283, ASTM 330, ASTM 331 and AAMA 508-07
- NFPA 285 Compliant



**R4000 Series**

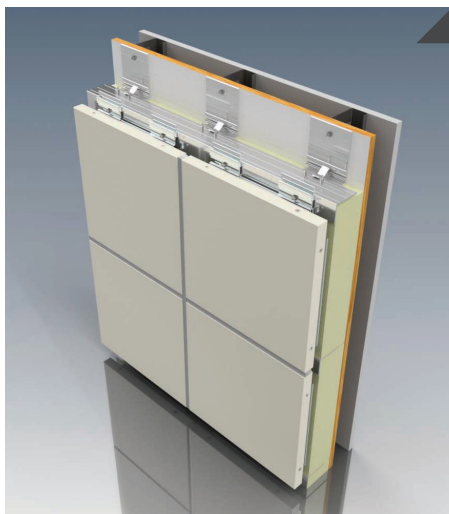
## **Drained Rear-Ventilated Rainscreen System**

CEI Materials' Performance Tested & Approved R4000 Drained/ Rear-Ventilated Rainscreen Panel Systems offers rainscreen technology with varying joint widths as well as color versatility.

### **System Characteristics:**

- Joint Width of 1/2 & 3/4"
- Independent 4mm MCM Spline Joint
- Most economical Rainscreen System
- Tested to ASTM 283, ASTM 330, ASTM 331 and AAMA 509-09
- NFPA 285 Compliant

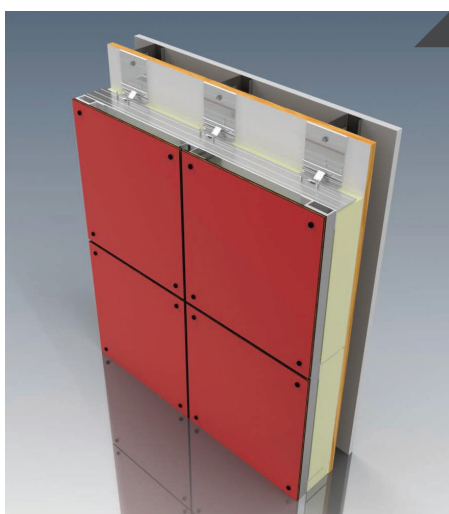


**W5000 Series****Route and Return Silicone Joint System**

CEI Materials' W5000 Route & Return Silicone Joint Panel Systems offer a weather tight economical assembly utilizing a closed cell backer rod, structural silicone joint and hidden fasteners. The non-progressive design offers installation versatility.

**System Characteristics:**

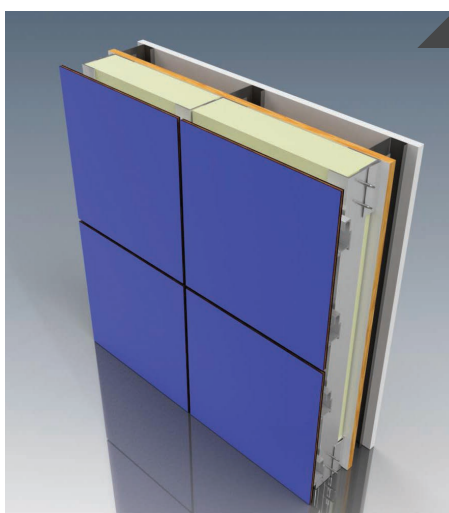
- Joint Width of 1/2 & 5/8"
- Non Progressive - Individual Removable Panels
- Most Economical System
- Tested to ASTM 283, ASTM 330 and ASTM 331

**E1000 Exposed****E1000 Exposed Fastener Attachment System**

CEI Materials' E1000 Exposed Fastener Attachment Systems are cost effective yet still offer an architecturally attractive look.

**System Characteristics:**

- Drained Back-Ventilated Rainscreen
- 1" System Depth
- Visible Rivet Fixing
- High Pull-Out Values and Ease of Installation
- NFPA 285 Compliant

**C2000 Concealed****C2000 Concealed Fastener Attachment System**

CEI Materials' C2000 Concealed Fastener Attachment Systems offer installation flexibility by using a concealed adjustable bracket for a smooth finish with precision joints.

**System Characteristics:**

- Drained Back-Ventilated Rainscreen
- 1 1/2" System Depth
- The Back of Each Panel is Pre-Drilled Using Undercut Drill Bit to Receive the Hanger Clip and Expanding Bolt Anchor
- NFPA 285 Compliant

**CLADLOK Series****Cladlok Tapered Panel System**

Tapered panels can be used to create inventive patterns. With variations in depth and angle, the panel can taper in almost any direction without altering the substrate or the weather barrier.

**System Characteristics:**

- Multiple-Depth Walls/Multiple-Depth Per Panel
- For Use With Aluminum, Zinc, Copper, & Stainless Steel
- Customizable
- Limitless Design Options
- No Clips or Extrusions = Quick & Easy Installation

**CLADLOK Series****Cladlok Dimensional Panel System**

Dimensional panels offer an inventive variation on the traditional flat substrate without disrupting the weather barrier. Panels can be installed at differing depths on the same plane to form a new level of intrigue.

**System Characteristics:**

- Multiple-Depth Walls/Single-Depth Per Panel
- For Use With Aluminum, Zinc, Copper, & Stainless Steel
- Customizable
- Limitless Design Options
- No Clips or Extrusions = Quick & Easy Installation

**CLADLOK Series****Cladlok Flat Panel System**

Flat panels can be installed vertically, horizontally, or diagonally in a range of finishes offering you a variety of design options. Our flat panels provide a smooth, level surface with clean lines.

**System Characteristics:**

- Single-Depth Walls/Standard Flat Surface
- For Use With Aluminum, Zinc, Copper, & Stainless Steel
- Customizable
- Economical
- No Clips or Extrusions = Quick & Easy Installation



### INOVEZE Plank Panel Systems

CEI Materials' INOVEZE rainscreen planking systems are an attractive, durable option for your exterior façade. Designed for fast installation, these prefinished planks are easy to clean and come with a 10-year product guarantee for longterm exterior performance. Inoveze planks can also be installed vertically or horizontally to achieve a cost effective innovative design solution.



**INOVEZE Series**



**INOVEZE Series**

### C-Plank Concealed Fastener Attachment System

#### SIZES:

**Width:** 6" Min – 24" Max in ½" increments

**Length:** 60" or 120"

**Thickness:** 8MM

**System Depth:** 5/8" (without subframing)

#### ORIENTATION:

**Vertical or Horizontal**

### E-Plank Exposed Fastener Attachment System

#### SIZES:

**Width:** 6" Min – 24" Max in ½" increments

**Length:** 60" or 120"

**Thickness:** 8MM

**System Depth:** 1 3/8"

#### ORIENTATION:

**Vertical or Horizontal**

# Corporate Branding

*At CEI Materials, we are the fabricator behind the storefronts of many corporate brands. We ensure that the products we provide maintain the integrity and the distinct appearance and composition of each image program.*







CEI Materials provides services to many companies looking for Corporate Identity services. We have completed hundreds of projects representing major brands. CEI Materials also possesses the capability to produce the façade and the corresponding entry element for several companies' Corporate Identity Programs.

Our method is simple; CEI Materials certifies that the design intent is preserved by our compliance to the requirements of the guide specifications as stipulated by the client. This distinction was acquired through effective communications and by producing designs that adhere to or exceed the metal panel façade/cladding specification standards for each and every CID program.

CEI Materials possesses the capability of producing several brands of Modular Entry Elements at a large volume for aggressive CID roll outs. With a proven, repeatable process for the prefabrication, preassembly, modularization and installation of Modular components, CEI Materials is highly proficient. We welcome the opportunity to assist with your next Modular Entry Element.

Project Name:

**Porsche of North Seattle**

Architect:

Carlson Veit Junge Architects

Completion Date:

2024

Location:

Seattle, Washington



[www.ceimaterials.com](http://www.ceimaterials.com) | [sales@ceimaterials.com](mailto:sales@ceimaterials.com)  
800 E. Duncan Street, Manchester, Michigan 1.734.212.3006  
1220 North 2200 West, Suite 100, Salt Lake City, Utah 1.385.401.1022

