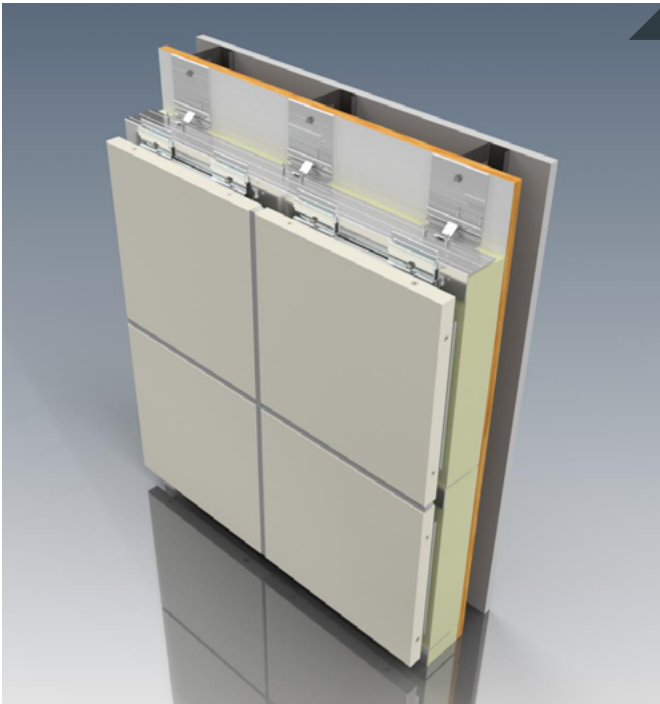


# W5000

## Route and Return Silicone Joint System

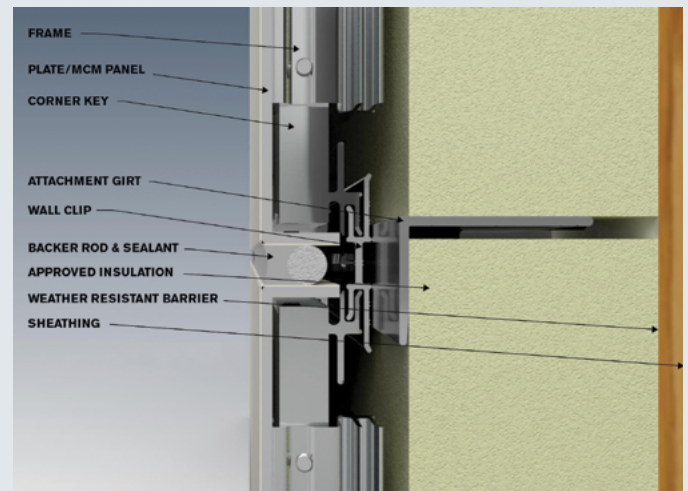


### System Characteristics:

- Route & Return Caulked Joint
- Joint Width of 1/2 & 5/8"
- Non Progressive - Individual Removable Panels
- Most Economical System
- Available With MCM or Aluminum Plate

### Route & Return Silicone Joint System

CEI Materials' W5000 Route & Return Silicone Joint Panel Systems offer a weather tight economical assembly utilizing a closed cell backer rod, structural silicone joint and hidden fasteners. The non-progressive design offers installation versatility.



# W5000

## Route and Return Silicone Joint System

### TECHNICAL DETAILS

#### Face Material:

- Alucobond®
- Reynobond®
- ALPOLIC®
- Vitrabond®
- Aluminum Plate Alloy 3003 & 5052

#### System Depth:

1 11/16" minimum, 1 15/16" design

#### Panel Extrusions:

Aluminum Alloy: 6063-T6  
Panel Perimeter Extrusion: Semi-Continuous

#### Fabricated Panel Tolerance:

**Length:** Plus 1mm (0.0394")  
**Width:** Plus 1mm (0.0394")  
**Depth:** Plus or minus 0.2mm (0.008")  
**Squareness:** .5mm (0.016") maximum

#### Tested Systems & Code Compliance:

At CEI Materials we are dedicated to making sure that our cladding systems meet and exceed all the project specific requirements for performance and adherence to local & International Building Code standards. Depending on the system we will clearly identify what tests and procedures were completed internally and with third party assistance.

**ASTM E 283** - Static Air Infiltration

**ASTM E 330** - Structural Design loads (40psf)

**ASTM E 331** - Static Water Infiltration

**NFPA 285** - Multi-Story Flame Spread Test

**Florida Product Approval**

#### System Details:

All system details at CEI Materials are available in Autocad & Revit.