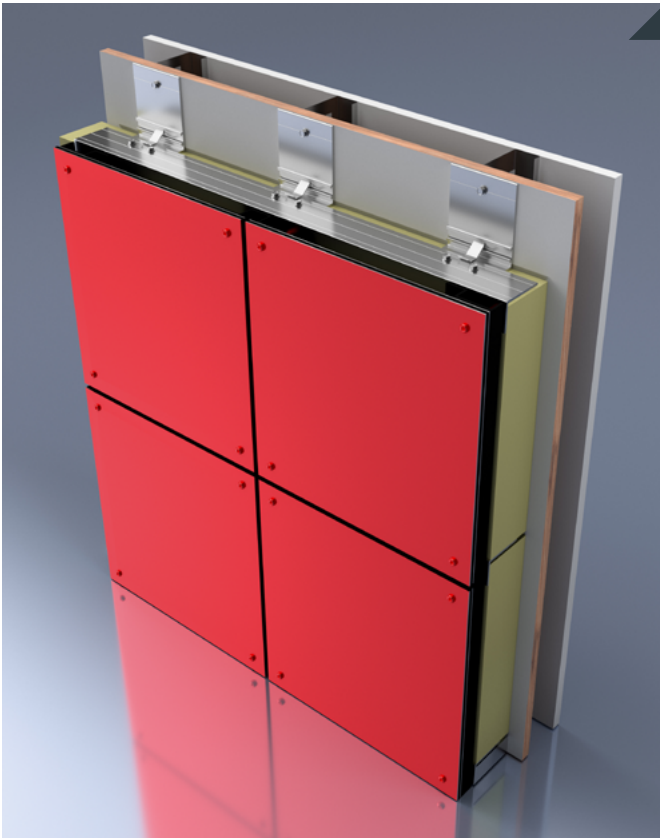


E1000

Installation Guide



CEI Materials' E1000 panel system is easily installed to a wide variety of substrates and sub girt systems. The system can be provided in HPL, Aluminum Plate and MCM. Flat panels have exposed fasteners and install rapidly reducing installation costs. Panel sizes vary and are designed in conjunction with one another based off shop drawings, field measurements or finished panel sizes provided by client.

Centering Tool

By utilizing the centering tool, the fastener will allow for float from thermal movement while still securing the panel to the wall. The hole size through the panel is larger than the fastener intentionally to allow for the panel to move and not compromise the fastener.



Field Cutting

When field cutting utilizing either a jig saw or circular saw select a fine blade. For a Jig saw a 20TPI blade will cut very clean and not chip the cut edge. For a circular saw a 7 ¼" blade with a 40t will be your best option. Cutting from the back side of the panel will eliminate scratching and edge chipping.

Air Gap Behind Panel

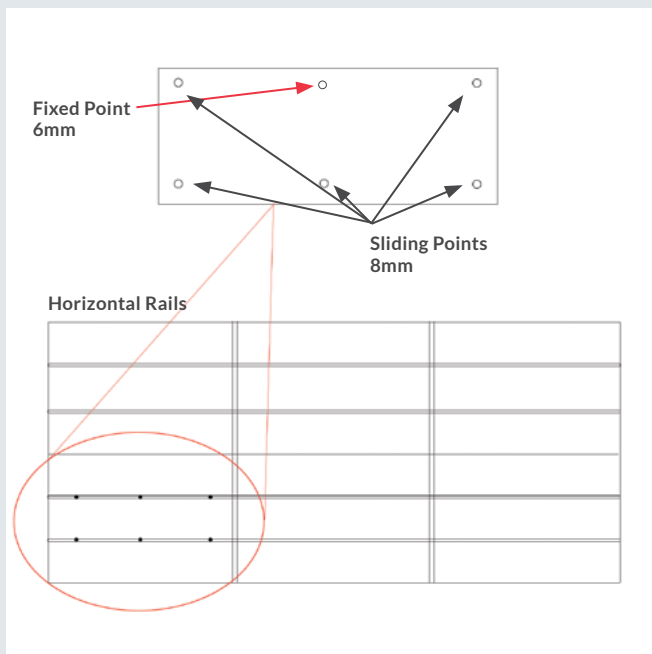
All panels should maintain a 1" air gap between panels and substrate. This will allow for water and air to escape at the bottom of the wall and at the intermediate joints.

E1000

Installation Guide

Fixed Points

Each individual panel will have a single fixed point as close to center of panel as possible and in the upper portion. The drilled hole will be noticeably smaller and should be the first fastener installed. This keeps the panel system stable during thermal movement.



Joint Spacing

Joint spacing is based off design intent but is typically 1/4" - 3/8" open joint. This will be referenced in the install drawings and based off the approved shop drawings.

Holes In Panels

Holes in the panels will be predrilled in the factory and will have a sub girt layout referenced in the installation drawings. Where the girt needs to be attached to the building to accomplish desired layout should be referenced and considered when marking out layout. Holes will be level as to hit a single girt but will also allow fastening to a line for easy reference during installation.

Hole Locations Near Edge Of Panel

Holes near edges of panels should maintain a 1 1/4" minimum. In the case of a NFPA 285 HPL assembly a 2" minimum edge space to fastener is required.

