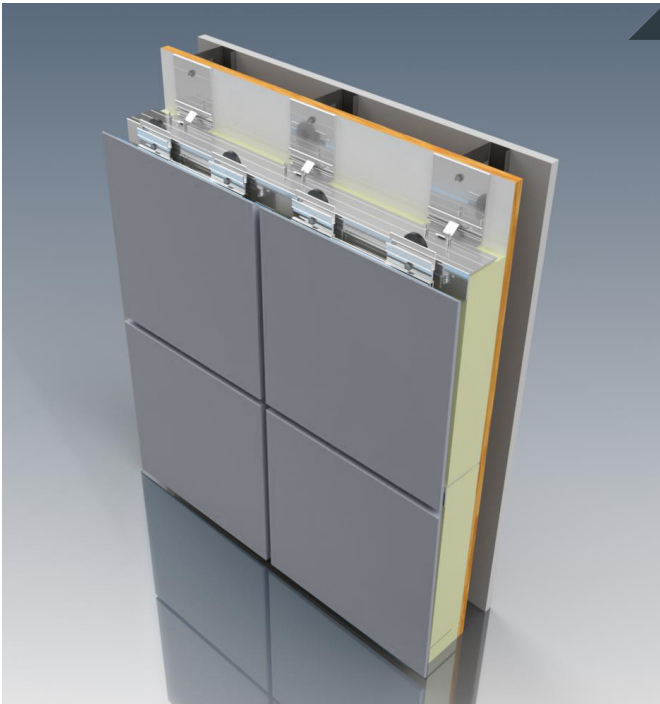


Aluminum Plate Panels

R3000, R4000, W5000, E1000, CL100, CL200, CL300



System Characteristics:

- 100% Recyclable
- Non Combustible
- Impact Resistant
- Durability: Rigidity of a Solid Panel
- Design Flexibility: Easy to Form/Perforate
- Can be Pre- or Post-Painted
- Cost Effective in Small Quantities
- Variety of Attachment Systems

Aluminum Plate Panels

CEI Materials' Aluminum Plate panels are made from solid 1/8" aluminum and offers the flatness and stiffness of MCM panels but with the dent resistance and recyclability of sheet metal. Available in numerous colors and finishes, aluminum plate has numerous fabrication and design options for both small and large projects.

